

MINNI_4 gambe legno / MINNI_4 wood legs

Design Nello Palomba, Antony Filipis



La **sedia Minni con gambe in legno** è la sedia di design definita da linee classiche e evergreen, il complemento d'arredo perfetto per luoghi residenziali o lavorativi.

Lo schienale e la seduta imbottiti, realizzati con maestria artigianale, offrono un **comfort impareggiabile**, avvolgendovi in un abbraccio morbido e accogliente.

Ogni dettaglio è curato con la massima attenzione, dalle cuciture impeccabili alla scelta di materiali pregiati. La particolare gamba in metallo, che sembra quasi abbracciare la seduta, regala un'**immagine di grande leggerezza**, mentre la versione con gamba in legno massello conferisce un tocco di **calore e naturalezza**.

La particolare gamba in metallo o legno massello, a seconda della versione scelta, aggiunge un tocco di raffinatezza e leggerezza alla struttura. Ogni dettaglio, dalle cuciture impeccabili alle finiture curate, è pensato per garantire la massima qualità e durata nel tempo. Disponibile in una vasta gamma di rivestimenti, dalla pregiata pelle all'ecopelle e al tessuto, la **sedia Minni** si adatta perfettamente a qualsiasi ambiente, dal salotto più elegante all'ufficio più moderno. La versione con braccioli, inoltre, offre un ulteriore livello di comfort e relax.

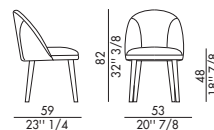
Disponibile anche nella versione sedia Minni con gambe in metallo.

The Minni chair with wooden legs is a designer chair defined by classic and evergreen lines, the perfect furnishing complement for residential or working places. The padded backrest and seat, crafted with artisanal skill, offer unparalleled comfort, enveloping you in a soft and welcoming embrace. Every detail is meticulously cared for, from the impeccable stitching to the choice of premium materials. The special metal or solid wood leg, depending on the version chosen, adds a touch of refinement and lightness to the structure. Every detail, from the impeccable stitching to the well-finished finishes, is designed to ensure maximum quality and durability over time. Available in a wide range of coverings, from fine leather to eco-leather and fabric, the Minni chair perfectly adapts to any environment, from the most elegant living room to the most modern office. The version with armrests also offers an additional level of comfort and

eforma
DESIGN ITALIANO

relaxation. Also available in the Minni chair version with metal legs.

Informazioni tecniche / Technical informations



Poltroncina imbottita con gambe in legno massello di frassino tinto.

Noce Canaletto	FVC
Frassino Nero	FNR
Frassino Testa di Moro	FTM

Rivestimento non sfoderabile.

 H 140 cm x L 130 cm  2,50 m²

Upholstered armchair with ash stained solid wooden legs.

Canaletto Walnut Ash	FVC
Black Ash	FNR
Dark Brown Ash	FTM

Cover not removable.

 H 140 cm x L 130 cm  2,50 m²

FINITURE/FINISHES

Attenzione: il prodotto finito può presentare delle lievi variazioni di colore rispetto ai campioni forniti dall'azienda. I colori visualizzati sono puramente indicativi e possono variare rispetto alla realtà. Rivolgersi ad EFORMA o al proprio rivenditore di fiducia per ricevere maggiori informazioni. EFORMA si riserva di apportare modifiche e/o migliorie di carattere tecnico ed estetico ai propri modelli e prodotti in qualsiasi momento e senza preavviso. / *Attention: the final product may show slight variations in colour compared to the samples supplied by the company. The colours displayed are indicative and can vary in reality. Please contact EFORMA or your preferred retailer for more information. EFORMA reserves the right to change and/or apply technical and esthetical improvements to its models and products at any time without any notice.*

Metallo/Metal

I metalli della nostra collezione vengono verniciati a polvere così da rivestire le nostre superfici a scopo decorativo e protettivo. Lo spessore finale della verniciatura a polveri, risulta particolarmente elevata contribuendo ad una serie di rilevanti vantaggi sul prodotto verniciato: resistenza meccanica, resistenza agli agenti corrosivi, scarsa infiammabilità, precisione nell'applicazione. Le verniciature a polveri utilizzate sono totalmente atossiche e prive di solventi, per questo motivo la verniciatura a polveri è una lavorazione ECO-FRIENDLY, a bassissimo impatto ambientale. Disponibile la versione cromata dove il metallo o l'alluminio vengono rivestiti di cromo, conferendogli così durezza, resistenza chimica e resistenza all'ossidazione. / *The metals in our collection are powder coated in order to coat our surfaces for decorative and protective purposes. The final thickness of the powder coating is particularly high contributing to a series of advantages for the painted product: mechanical resistance, resistance to corrosive agents, low flammability, precision in the application. The powder coatings used are non-toxic and solvent-free, for this reason powder coating is an ECO-FRIENDLY process, with a very low environmental impact. The chrome version is available where the metal or aluminum is coated with chrome, giving it hardness, chemical resistance and resistance to oxidation.*



V01 - Nero/Black



V02 - Bianco/White



V03 - Antracite/Anthracite



V04 - Titanio/Titanium



V05 - Bronzo/Bronze



V06 - Oro/Gold



CRO - Cromo/Chrome



CRN - Cromo Nero/
Black Chrome



ASP - Alluminio Spazzolato/
Polished Aluminium

Legno/Wood

Il legno che viene utilizzato è tra i migliori che esistono sul mercato europeo. Viene lavorato con le migliori tecniche garantendo così resistenza e durata. *The wood which is used is one of the best available in European markets. It is worked with the best techniques guaranteeing resistance and durability.*

LEGNO MASSELLO/SOLID WOOD

Il legno utilizzato è un materiale di pregio che si caratterizza principalmente per la resistenza all'usura e per l'estetica. Durante il suo ciclo di crescita, sviluppo e maturazione, il legno si evolve nelle sue qualità come il cambio nel colore, nei nodi, e nelle vene. Essendo un materiale vivo, e naturale, può presentare delle variazioni di vene e di tonalità. *The wood used is a valuable material that is mainly characterized by its wear resistance and its aesthetics. During its cycle of growth, development and maturation, the wood's qualities. Evolve showing a change in color, in the knots, and in the veins. Being a living, natural material, it can present variations in veins and shades.*



FVC - Frassino tinto Noce Canaletto/
Canaletto Walnut stained Ash



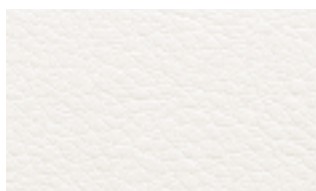
FNR - Frassino tinto Nero/Black stained Ash



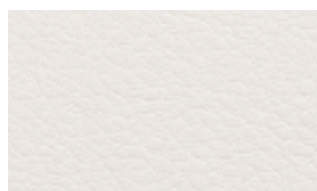
FTM - Frassino tinto Testa di Moro/
Dark Brown stained Ash

Finiture imbottiture / Upholstery Finishes

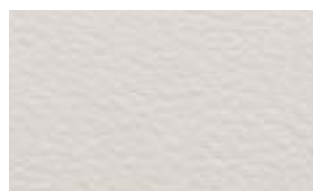
Rivestimento in ecopelle / Covering in eco-leather



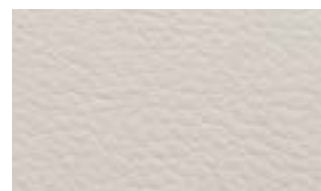
1 Bianco



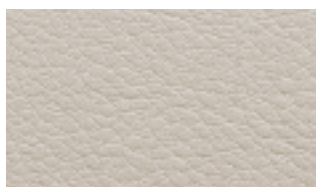
2 Latte



25 Panna



9 Avorio



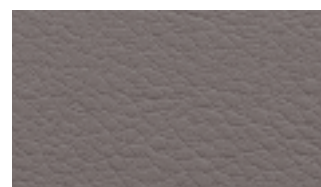
11 Beige



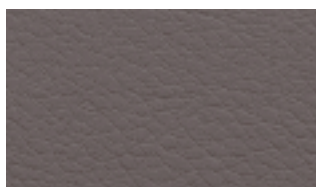
13 Canapa



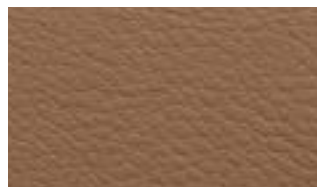
12 Beige scuro



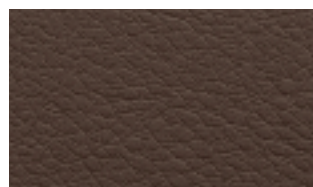
14 Fango



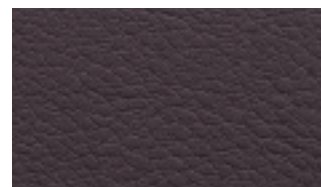
15 Tortora



30 Tabacco



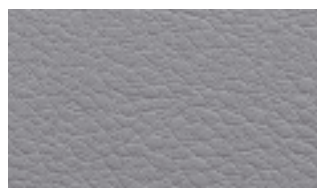
31 Marrone scuro



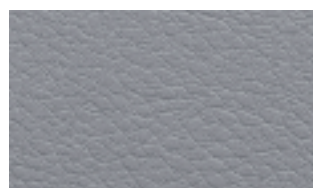
16 Testa di moro



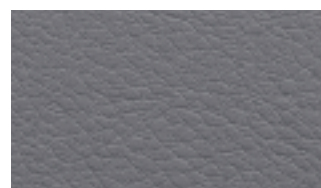
4 Grigio chiaro



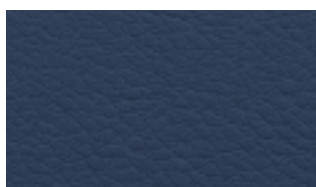
5 Grigio



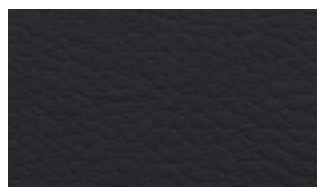
6 Cenere



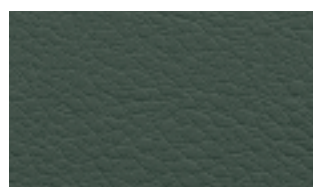
7 Antracite



56 Oceano



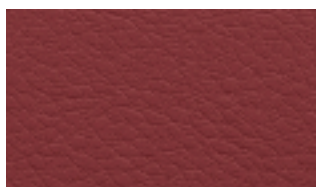
8 Nero



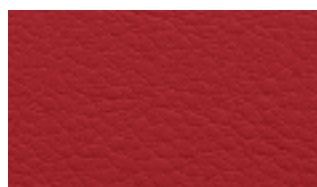
24 Verde scuro



23 Verde salvia

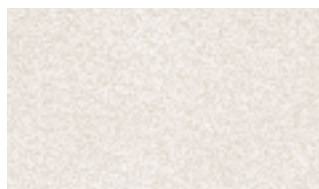


39 Bordeaux



35 Rosso

Rivestimento in econabuk / Covering in eco-nabuk



15 Bianco



1 Beige



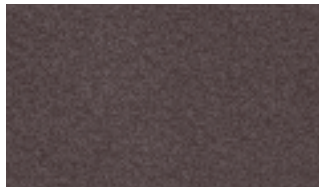
2 Marrone



3 Fango



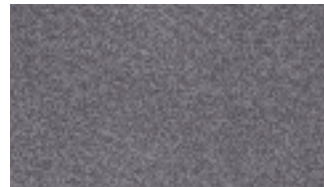
4 Cioccolato



5 Testa di moro



13 Grigio



6 Antracite



17 Blu



16 Bordeaux



11 Viola



12 Vinaccia



10 Ottanio

Rivestimento in econabuk / Covering in eco-nabuk



15 Bianco



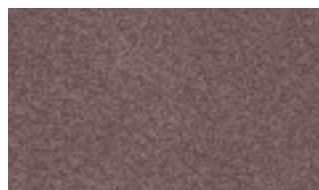
1 Beige



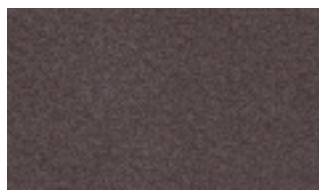
2 Marrone



3 Fango



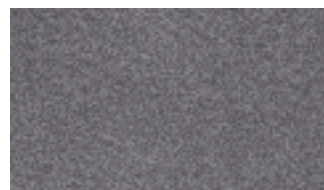
4 Cioccolato



5 Testa di moro



13 Grigio



6 Antracite



17 Blu



16 Bordeaux



11 Viola



12 Vinaccia



10 Ottanio

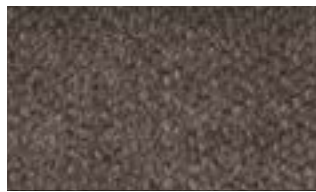
Rivestimento in tessuto A / *Covering fabric A*



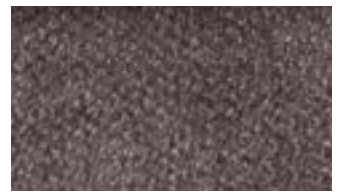
A 100



A 101



A 102



A 103



A 104



A 105



A 106



A 107



A 200



A 202



A 203



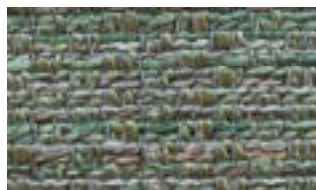
A 204



A 301



A 302



A 303

Rivestimento in tessuto B / Covering in fabric B



B 200



B 201



B 202



B 203



B 204



B 205



B 300



B 301



B 302



B 303



B 304



B 305



B 400



B 401



B 402



B 403



B 404



B 405



B 128



B 108



B 139



B 103



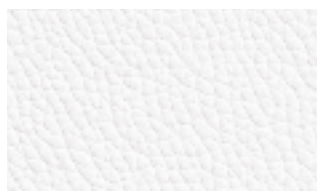
B 136



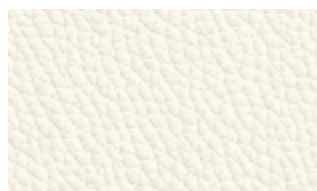
B 123



Rivestimento in pelle / *Covering in leather*



5000 Bianco



5518 Latte



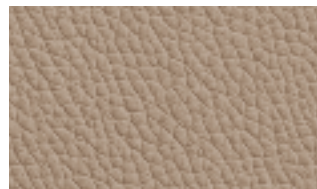
5508 Avorio



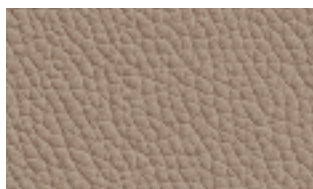
5480 Panna



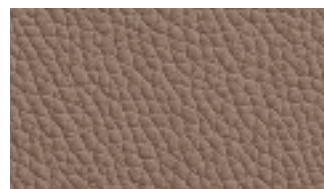
5528 Beige



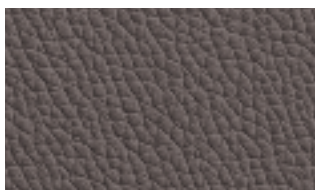
5320 Beige scuro



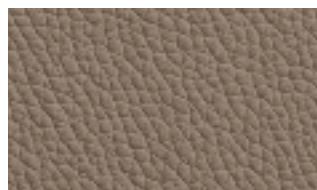
9034 Creta



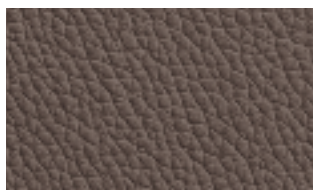
5502 Avana



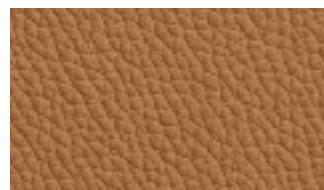
5414 Marrone



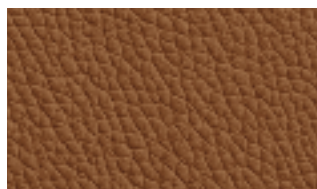
5522 Tortora



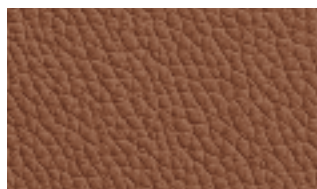
5504 Fango



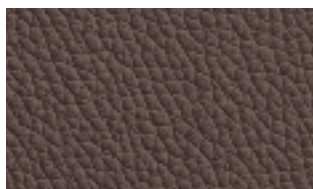
5070 Nocciola



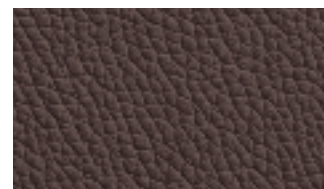
5110 Tabacco



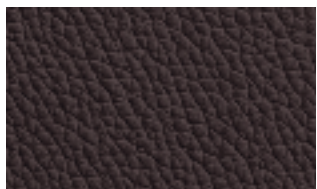
5090 Marrone chiaro



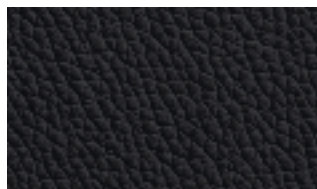
5400 Marrone scuro



9030 Cioccolato



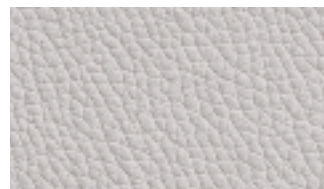
5270 Testa di moro



5300 Nero



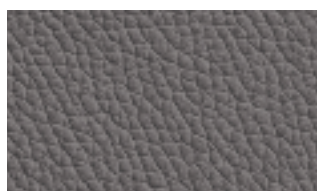
5402 Grigio chiaro



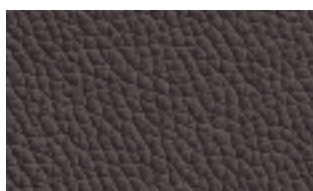
2256 Ghiaccio



5280 Cenere



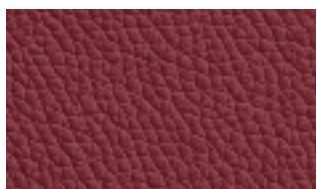
5290 Grigio medio



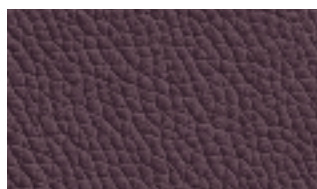
5310 Antracite



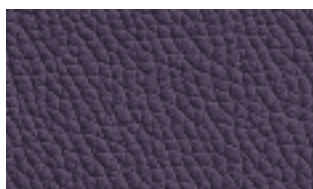
5200 Rosso



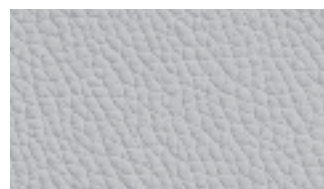
5210 Bordeaux



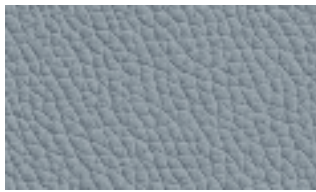
5460 Mora



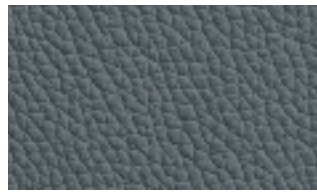
5406 Vinaccia



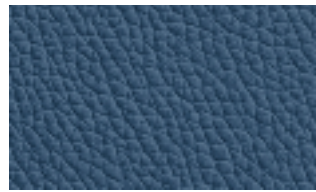
5420 Grigio



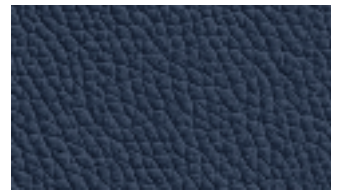
5416 Avio



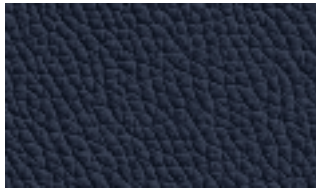
5428 Ottanio



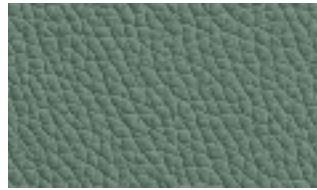
9031 Blu



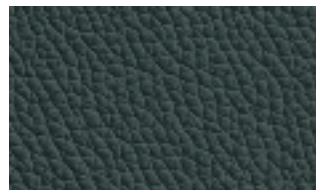
9021 Oceano



5431 Blu notte



5120 Verde salvia

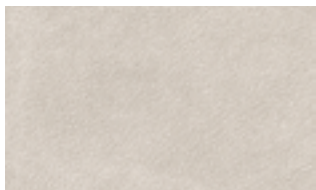


5150 Verde bosco



9045 Muschio

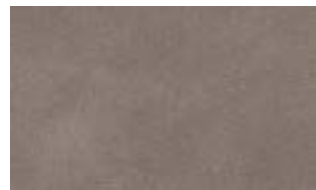
Rivestimento in pelle nabuk / *Covering in nabuk leather*



100 Sabbia



101 Conchiglia



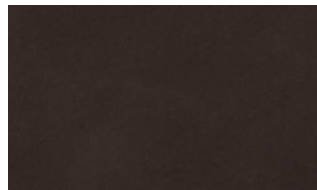
102 Seppia



103 Terra



110 Marrone



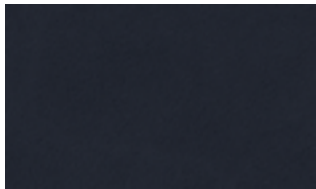
105 Marrone scuro



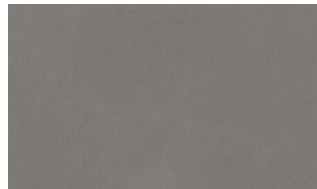
104 Salvia



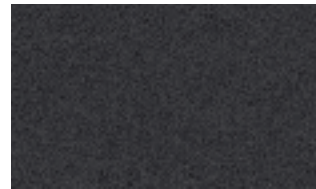
106 Orione



107 Oceano



108 Grigio



109 Antracite

Finiture dettagli / *Detail finishes*

Cordino in ecopelle e Zip / *Piping eco-leather and Zip*



1 Bianco



7 Antracite



8 Nero



11 Beige



14 Fango



16 Testa di Moro